

Lower Thames Crossing

6.2 Environmental Statement Figures

Figure 2.4 - Environmental Masterplan Section 3 (3 of 10) (Tracked changes version)

APFP Regulation 5(2)(a)

Infrastructure Planning (Applications:
Prescribed Forms and Procedure)
Regulations 2009

Volume 6

DATE: August 2023
DEADLINE: 2

Planning Inspectorate Scheme Ref: TR010032
Application Document Ref: TR010032/APP/6.2

VERSION: 2.0

Lower Thames Crossing

Figure 2.4: Environmental Masterplan

List of contents

	Page number
1 Environmental Masterplan: Section 3.....	1
1.1 Schedule of Plans included in this application document.....	1
1.2 Section 3 (Sheets 1-11)	2
1.3 Scheme Overview.....	3
1.4 Environmental Masterplan Legend	5
1.5 Section 3.....	7

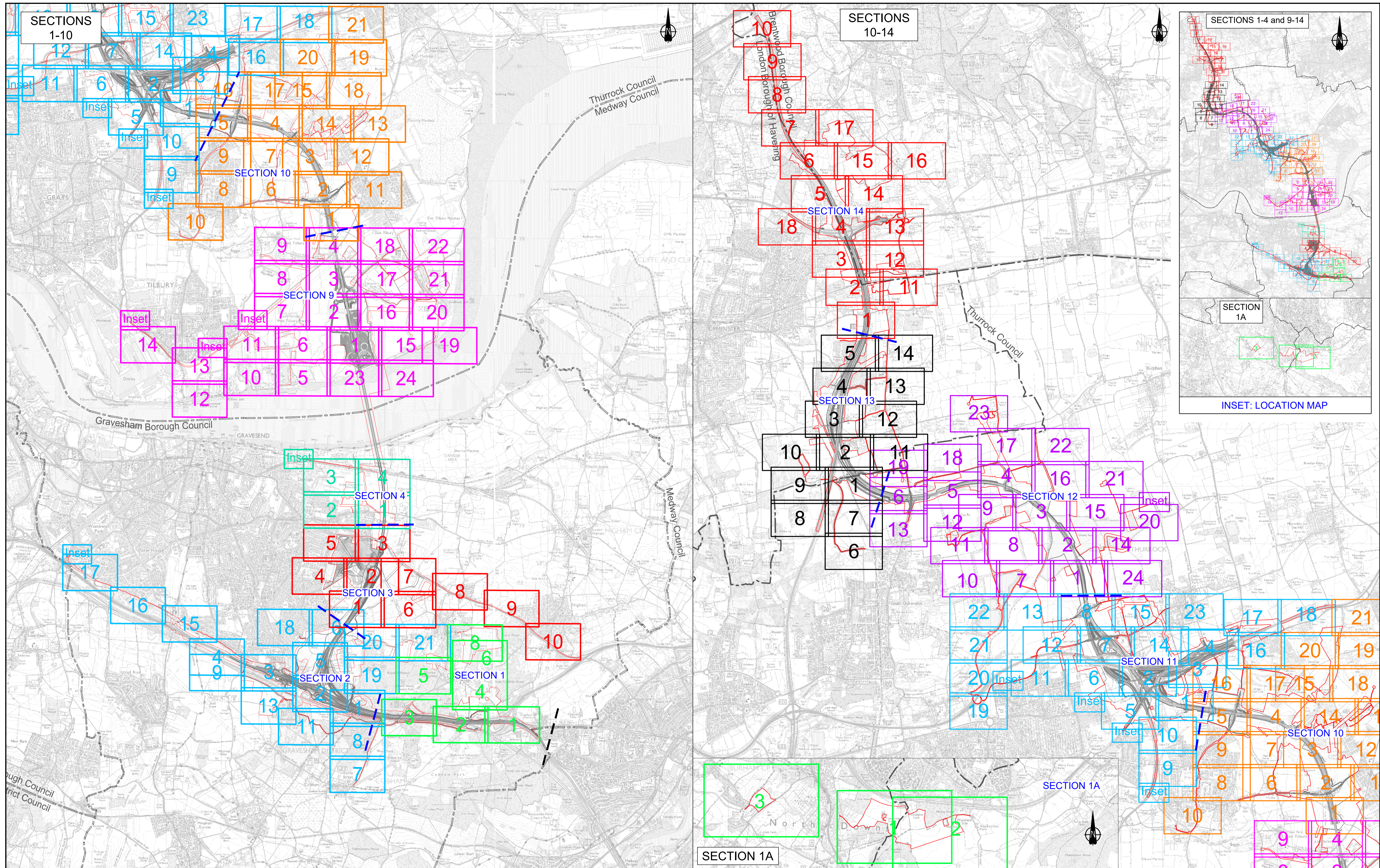
1 Environmental Masterplan: Section 3

1.1 Schedule of Plans included in this application document

1.2 Section 3 (Sheets 1-11)

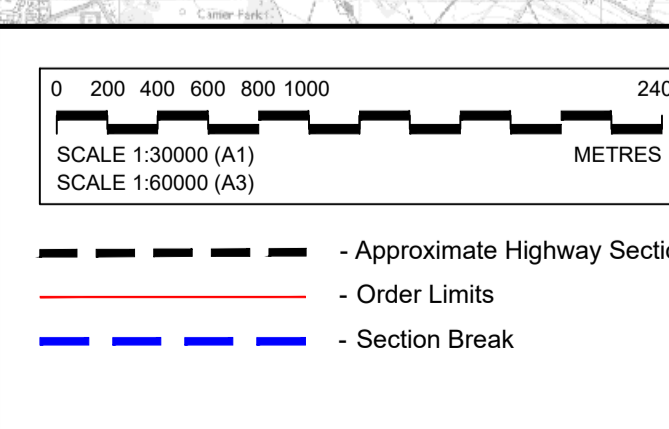
HE540039-CJV-EGN-S03_EN000000_Z-DR-ZZ- 00001 – Section 3 Overview	TR010032/APP/6.2	P01.6
HE540039-CJV-EGN-S03_EN000000_Z-DR-ZZ- 00002 - Section 3 Sheet 1	TR010032/APP/6.2	P02
HE540039-CJV-EGN-S03_EN000000_Z-DR-ZZ- 00003 - Section 3 Sheet 2	TR010032/APP/6.2	P02
HE540039-CJV-EGN-S03_EN000000_Z-DR-ZZ- 00004 - Section 3 Sheet 3	TR010032/APP/6.2	P02
HE540039-CJV-EGN-S03_EN000000_Z-DR-ZZ- 00005 - Section 3 Sheet 4	TR010032/APP/6.2	P01.6
HE540039-CJV-EGN-S03_EN000000_Z-DR-ZZ- 00006 - Section 3 Sheet 5	TR010032/APP/6.2	P01.5
HE540039-CJV-EGN-S03_EN000000_Z-DR-ZZ- 00007 - Section 3 Sheet 6	TR010032/APP/6.2	P01.5
HE540039-CJV-EGN-S03_EN000000_Z-DR-ZZ- 00008 - Section 3 Sheet 7	TR010032/APP/6.2	P01.6
HE540039-CJV-EGN-S03_EN000000_Z-DR-ZZ- 00009 - Section 3 Sheet 8	TR010032/APP/6.2	P01.6
HE540039-CJV-EGN-S03_EN000000_Z-DR-ZZ- 00010 - Section 3 Sheet 9	TR010032/APP/6.2	P01.6
HE540039-CJV-EGN-S03_EN000000_Z-DR-ZZ- 00012 - Section 3 Sheet 10	TR010032/APP/6.2	P01.5

1.3 Scheme Overview



Contains Ordnance Survey data. © Crown copyright and database rights 2022. Ordnance Survey 100030649

Rev	Status	Rev. Date	Purpose of revision	Drawn	Check'd	Apprv'd
P01.3	SD	2021/09/23				



Section Layout Key:

1	Section S1 (Sheets 1 - 8)	10	Section S10 (Sheets 1 - 21)
1A	Section S1A (Sheets 1 - 3)	11	Section S11 (Sheets 1 - 22)
2	Section S2 (Sheets 1 - 21)	12	Section S12 (Sheets 1 - 24)
3	Section S3 (Sheets 1 - 10)	13	Section S13 (Sheets 1 - 14)
4	Section S4 (Sheets 1 - 4)	14	Section S14 (Sheets 1 - 18)
5	Section S5 (Sheets 1 - 24)		

NOTE: Development of the Project design has resulted in the removal of some sheets forming part of the Environmental Masterplan, where acquisition of land for the Project is no longer required. In this instance, the original sheet numbering has been retained and therefore the sheet numbering shown on this Scheme Overview plan is not always consecutive.

For information, the following sheets have been omitted:

Section 1

- Sheet 7 (HE540039-CJV-EGN-S01_EN000000_Z-DR-ZZ-00008)

Section 2

- Sheet 10 (HE540039-CJV-EGN-S02_EN000000_Z-DR-ZZ-00011)
- Sheet 12 (HE540039-CJV-EGN-S02_EN000000_Z-DR-ZZ-00013)
- Sheet 14 (HE540039-CJV-EGN-S02_EN000000_Z-DR-ZZ-00015)

Client: **national highways**

Project: **LOWER THAMES CROSSING**

Status	Application Document Number	Original Size	Revision
	TR010032/APP/6.2	A1	P01.3
Drawing title	ENVIRONMENTAL MASTERPLAN SCHEME OVERVIEW		
Drawing Number	HE540039-CJV-EGN-SZZ_EN000000_Z-DR-ZZ-00002		

1.4 Environmental Masterplan Legend

EXISTING FEATURES

General Features

- Existing WCH Route
- Overhead Power Lines

Environmental Features

- Retained Woodland, Trees and Hedges (within Order Limits)
- Retained Woodland, Trees and Hedges (outside Order Limits)
- Waterbodies / Ponds
- Watercourses
- Tree Preservation Orders Area
- Individual Tree Preservation Orders
- Veteran Tree

PROPOSED PROJECT FEATURES

- Order Limits
- Permanent Acquisition of Land

General Project Features

- Existing Overhead Power Lines to be Removed
- Indicative Diverted and Modified Overhead Power Lines
- Proposed / Improved WCH Route
- Diverted / Redesignated WCH Route
- Proposed Carriageway
- Proposed Retaining Wall
- Proposed Cutting
- Proposed Embankment
- Proposed False Cutting Earthwork (up to 4m height above carriageway level typically at 1(v) 4(h) gradient)
- Proposed Watercourse Diversion
- Proposed Attenuation Ponds / Water Bodies
- Proposed Highway Estate Boundary Fencing
- Reinstated HS1 'Meshed' Fencing
- Proposed Security Fencing (incorporating highway boundary fence)
- Proposed Fencing Gates
- Proposed Tunnel Portal Building Outline (sub-surface)
- Proposed Highway Lighting and Gantry
- Proposed Green Bridge
- Proposed Traveller Site Replacement

General Project Features cont.

- Proposed Replacement Open Space
- Proposed Replacement Common Land
- Proposed Recreational Sites

PROPOSED LANDSCAPE ELEMENTS

Grassland (LE 1)

- LE 1.3 Species Rich Grassland
- LE 1.31 Species Rich Chalk Grassland
- LE 1.32 Species Rich Annual Wildflower Grassland
- LE 1.4 Rock and Scree

Planting (LE 2)

- LE 2.1 Woodland
- LE 2.11 Woodland With Non-Native Species
- LE 2.14 Wet / Carr Woodland
- LE 2.2 Woodland Edge
- LE 2.22 Scrub Woodland
- LE 2.4 Linear Belt of Shrubs and Trees
- LE 2.5 Shrubs With Intermittent Trees
- LE 2.7 Scattered Trees
- LE 2.8 Scrub / Scattered Scrub

Hedges (LE 4)

- LE 4.3 Native Species Hedge (untrimmed)
- LE 4.4 Native Hedgerow With Trees

Individual Trees (LE 5)

- LE 5.1 Individual Trees

Wetland Habitats (LE 6)

- LE 6.11 Water Bodies – Standing Water
- LE 6.12 Water Bodies and Associated Plants – Shallow Scrape Habitat
- LE 6.2 Banks and Ditches
- LE 6.21 Banks and Ditches – High Tide Roost Features
- LE 6.4 Wet Grassland

General Project Features cont.

- LE 6.41 Marsh and Wet Grassland – Coastal Grazing Marsh
- LE 7.2 Green Roof
- LE 7.3 Car Park
- LE 7.4 Reinforced Earth Bund

Ecological Habitats (LE 8)

- LE 8.1 Open Mosaic Habitat
- LE 8.2 Ancient Woodland Compensation Planting
- LE 8.3 Woodland Mitigation Planting
- LE 8.4 Wetland / Fenland Creation
- LE 8.5 Ecology Pond (Indicative symbol only)
- LE 8.6 Acid Grassland Soil Salvage
- LE 8.7 Nitrogen Deposition (NDEP) Compensation Area

Earthworks

- Proposed Contours

PROPOSED ENVIRONMENTAL ELEMENTS

Noise (E 1)

- E 1.2 Acoustic Barrier-Built Elements (typically incorporating highway boundary fence)

Water (E 2)

- Flood Compensation Areas (E2-FCA)
- Flood Defence (E2-FD)

Ecological (E 3)

- E 3.2 Ecological Habitat Creation and Receptor Sites for Protected Species
- E 3.2 Ecological Protection Measures – Dormouse Boxes
- E 3.2 Ecological Protection Measures – Bat / Bird Boxes
- E 3.2 Ecological Protection Measures – Ecological Culvert
- E 3.2 Ecological Protection Measures – Bat Barn Block
- E 3.2 Ecological Protection Measures – Ecological Fencing (incorporating highway boundary fence)

NOTES:

Land Reinstatement

The Environmental Masterplan is intended to show the permanent landscaping and environmental mitigation features that are embedded in the operational design. Land temporarily impacted by construction would be reinstated to its former condition and composition upon completion, as far as reasonably practicable and as provided for in DCO Article 35, unless otherwise shown in the Environmental Masterplan.

WCH Terminology and Route Information

The term 'WCH Routes' (which includes Public Rights of Way) refers to routes for walkers, cyclists and horse riders and is used in the broad sense within the Environmental Masterplan to refer to routes intended for at least one (but not necessarily more than one) of those users. For further information, please refer to the Rights of Way and Access Plans (Application Document 2.7) and the draft Development Consent Order (Application Document 3.1).

Veteran Trees

Veteran trees shown on the Environmental Masterplan include those identified in the Ancient Tree Inventory and project-identified potential ancient or veteran trees.

Outline Landscape and Ecological Management Plan

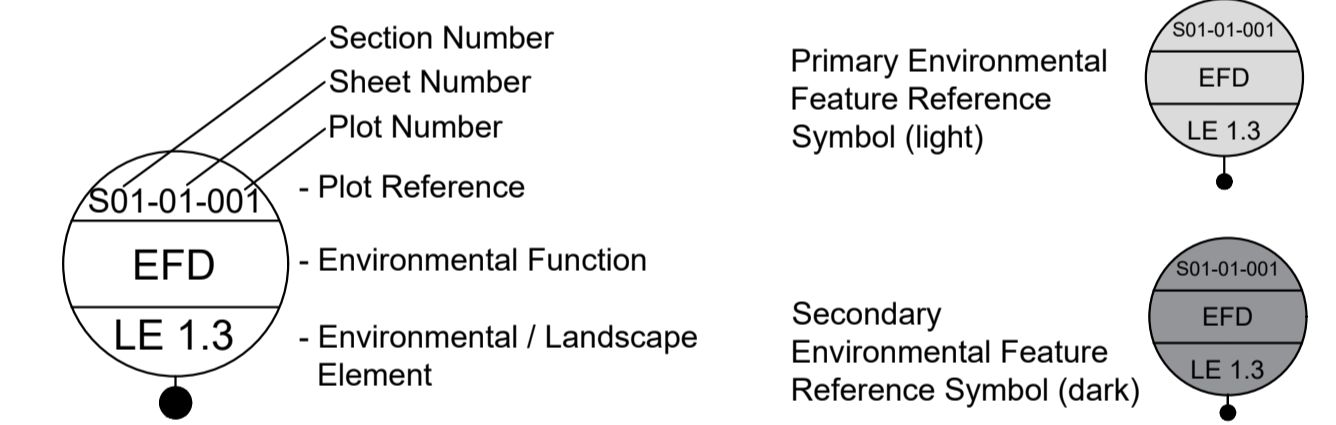
The outline Landscape and Ecology Management Plan (LEMP) separately sets out the proposed management for the environmental / landscape elements shown on the Environmental Masterplan. The Environment Masterplan secures the spatial extent and location of the environmental / landscape elements detailed within the outline LEMP. The outline LEMP details the management regimes, management expectations and monitoring requirements for the proposals in each land parcel shown on the Environmental Masterplan. It focuses on the management requirements for land parcels to be permanently acquired within the Order Limits and which perform specific landscape and ecological mitigation functions for the Project. For further detail regarding management requirements and principles, please refer to the outline LEMP (Application Document 6.7).

Existing WCH Routes

Existing WCH route information is based on Local Authority data. For further details, please refer to the relevant Local Authority Definitive Public Right of Way Map and Statement.

Environmental Feature Reference Symbol

An Environmental Feature Reference Symbol is provided for each environmental / landscape element. This contains a Plot Reference, the Environmental Function and the specific Landscape / Environmental Element. The Plot Reference is unique to each element labelled, and comprises the Section number, Sheet number and unique Plot number. Additional Environmental Feature Reference Symbols have been attributed to elements which span more than one page. The differences between the initial (Primary) Environmental Feature Reference Symbol and any additional (Secondary) versions are shown below.



Environmental Functions (EF)

- EFA Visual Screening
- EFB Landscape Integration
- EFC Enhancing the Built Environment
- EFD Nature Conservation and Biodiversity
- EFE Visual Amenity
- EFF Heritage
- EFG Auditory Amenity
- EFH Water Quality
- EFJ Agricultural / Highway Boundary
- EFK Access

Project Design Report

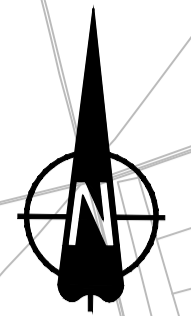
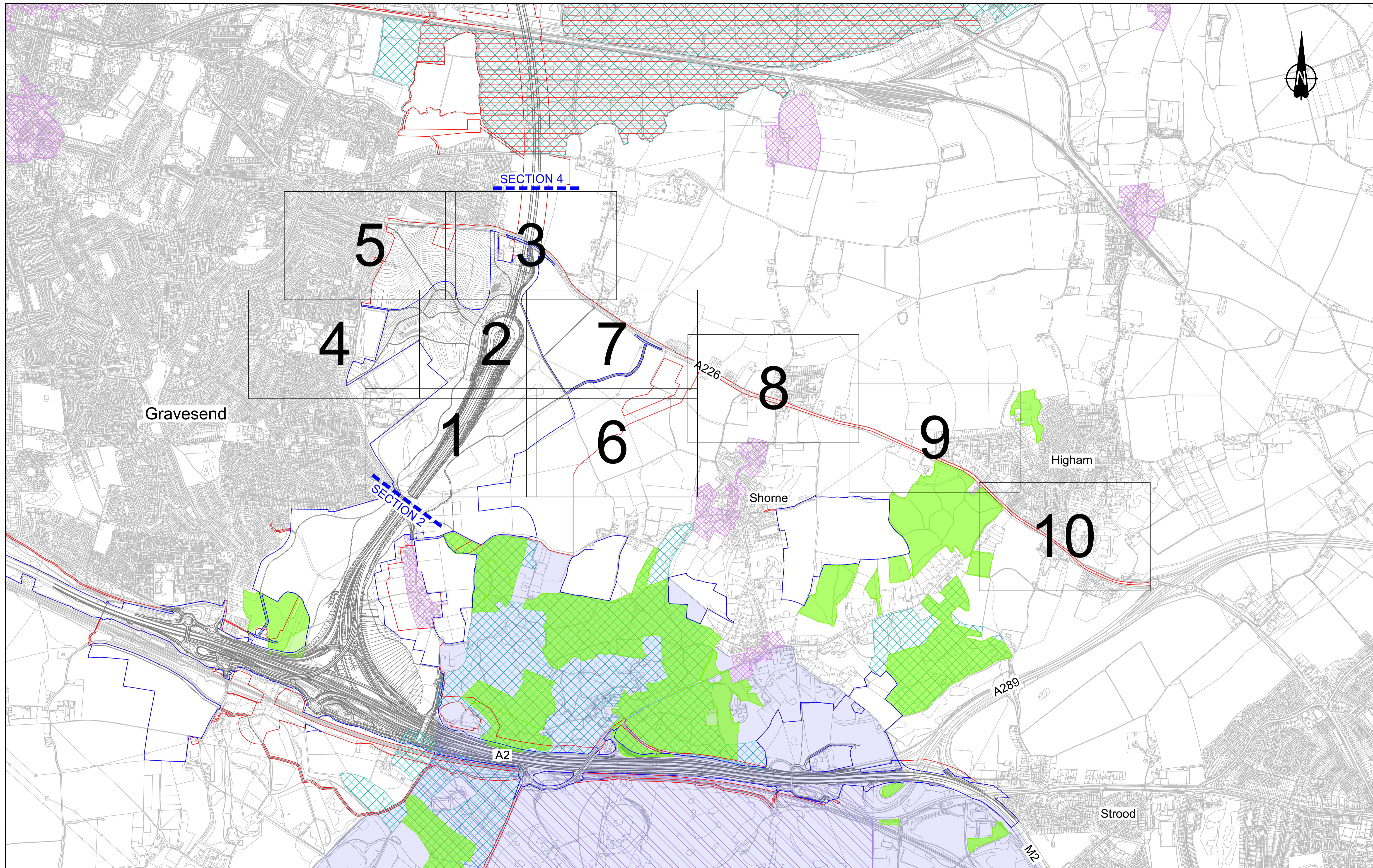
For further detail on the Landscape Design and Special Category Land shown within these plans, as well as the associated background and approach, please refer to the Project Design Report, Volume 2 Book of Plans, and Design Principles document (Application Documents 7.4, 6.2 and 7.5 respectively).

Contains Ordnance Survey data. © Crown copyright and database rights 2022. Ordnance Survey 100030649

Rev	Status	Rev. Date	Purpose of revision	Drawn	Check'd	Apprv'd

	Client	Status Initial Status or WIP Application Document Number TR010032/APP/6.2 Drawing title ENVIRONMENTAL MASTERPLAN LEGEND Drawing Number HE540039-CJV-EGN-SZZ_EN000000_Z-DR-ZZ-00001	Original Size	A1	Revision	P01.6
	Project		LOWER THAMES CROSSING	Scale		

1.5 Section 3



Contains Ordnance Survey data. © Crown copyright and database rights 2022. Ordnance Survey 100035649

0 100 200 300 400 500 600 700 800 900 1000 METRES

SCALE 1:10000 (A1)
SCALE 1:20000 (A3)

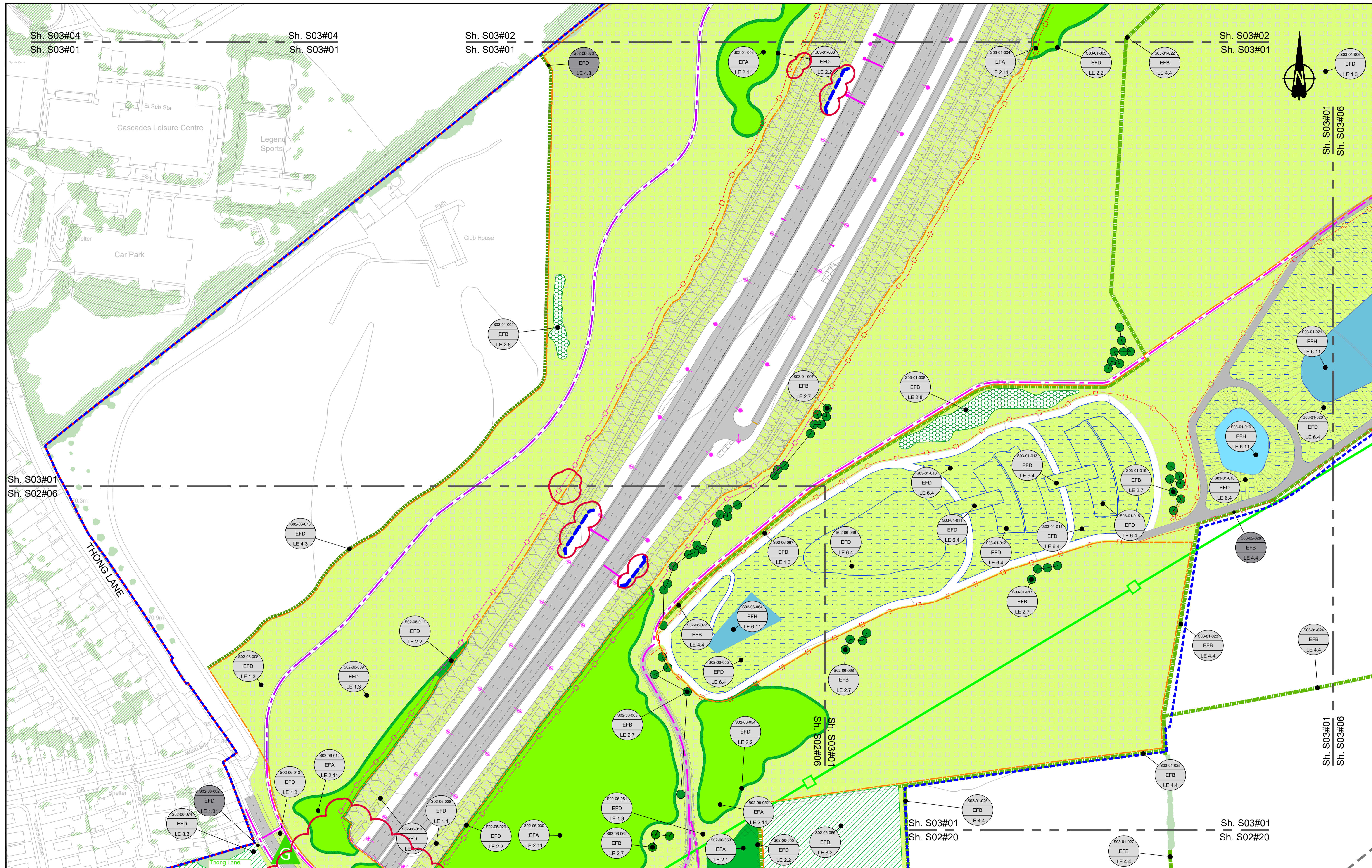
Rev	Status	Rev. Date	Purpose of revision	Drawn	Chck'd	Apprv'd
P01.5	SD	10/05/2022				

- LEGEND**
- Order Limits
 - Permanent Acquisition of Land
 - Area of Outstanding National Beauty (AONB)
 - Site of Special Scientific Interest (SSSI)
 - Registered Parks and Gardens
 - Ramsar Sites
 - Ancient Woodland
 - Conservation Area

Client: **national highways**

Project: **LOWER THAMES CROSSING**

Status	Initial Status or WIP	Original Size	Revision
Application Document Number	TR010032/APP/6.2	A1	P01.5
Drawing title	ENVIRONMENTAL MASTERPLAN OVERVIEW PLAN SECTION 3		
Drawing Number	HE540039-CJV-EGN-S03_EN000000_Z-DR-ZZ-00001		



Contains Ordnance Survey data. © Crown copyright and database rights 2022. Ordnance Survey 100030469

0 10 20 30 40 50 60 70 80 90 100 METRES

SCALE 1:1250 (A1)
SCALE 1:2500 (A3)

Section Overview Sheet: Refer to section overview plan at the start of the section.

P01	S2	25/10/2022	DCO Application	SA	PS	MH
P02	S9	19/07/2023	Deadline 2	LD	SK	BF
Rev	Status	Rev. Date	Purpose of revision	Drawn	Chkd	Apprv'd

Environmental Mitigation Legend: Refer to Main Legend for baseline and scheme features (Dwg: HE540039-CJV-EGN-SZ2_EN000000_Z-DR-ZZ-00001).

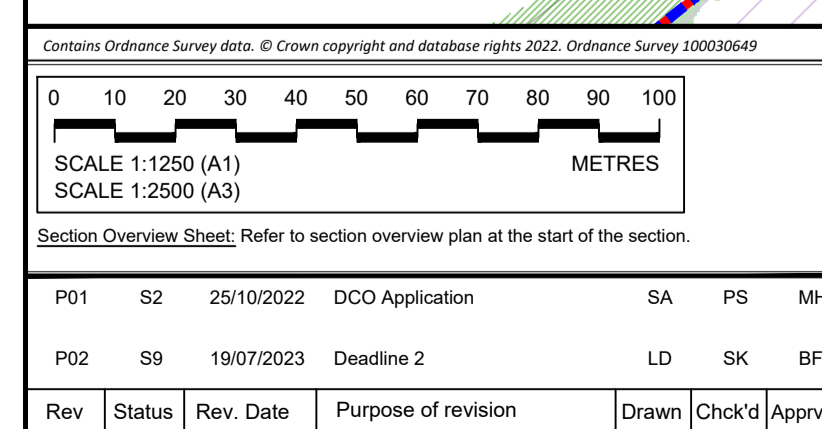
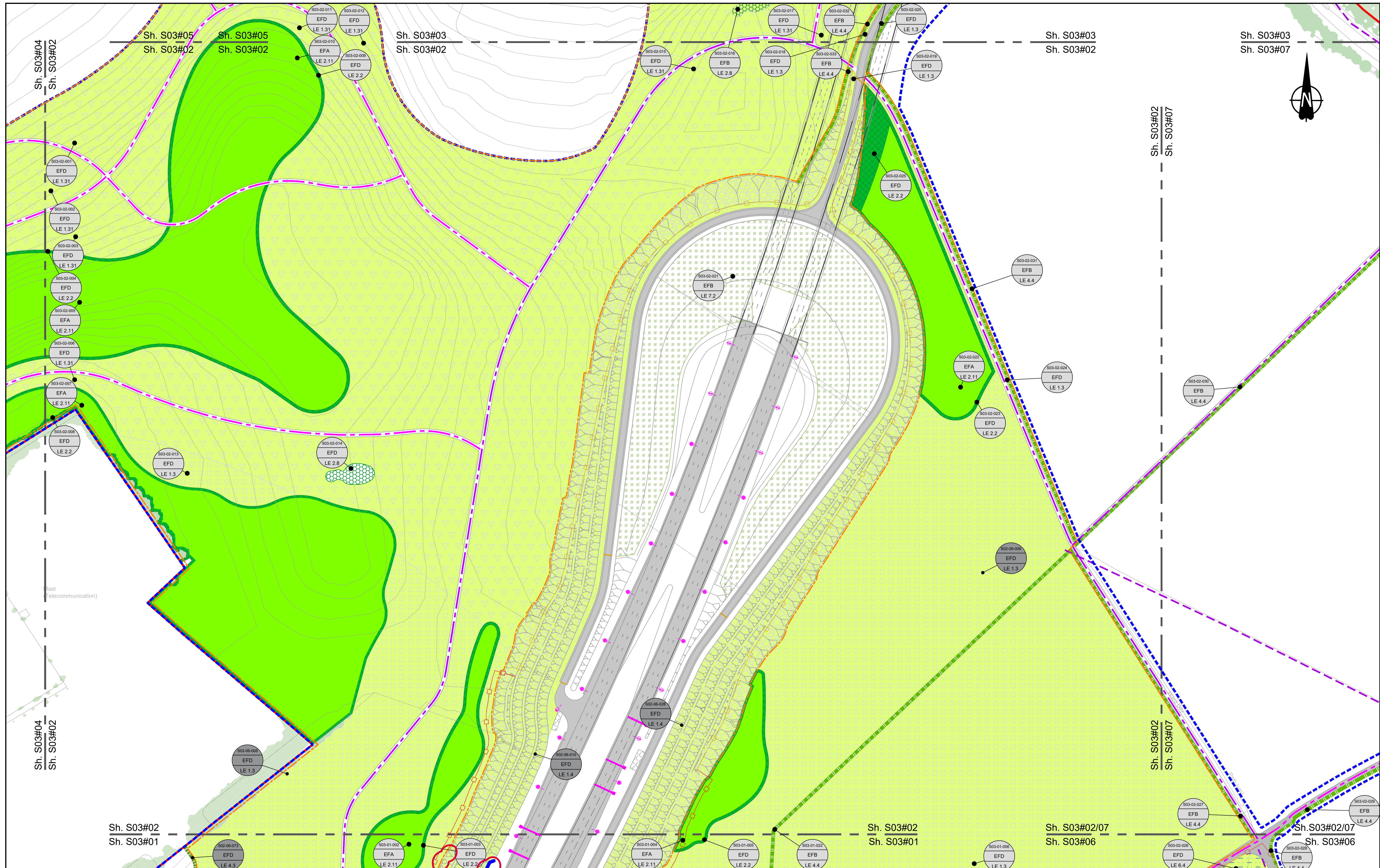
Order Limits	Planting (LE 2)	Individual Trees (LE 5)	Ecological Habitats (LE 8)	Noise (E 1)	Ecological (E 3)
Permanent Acquisition of Land	LE 2.1 Woodland	LE 5.1 Individual Trees	LE 8.1 Open Mosaic Habitat	LE 8.7 Nitrogen Deposition (NDEP) Compensation Area	E 3.2 Ecological Habitat Creation and Receptor sites for Protected Species
Grassland (LE 1)	LE 2.11 Woodland With Non-Native Species	Wetland Habitats (LE 6)	LE 8.2 Ancient Woodland Compensation Planting	E 1.2 Acoustic Barrier-Built Elements (typically inc. highway boundary fence)	E 3.2 Ecological Fencing (inc. highway boundary fence)
LE 1.3 Species Rich Grassland	LE 2.14 Wet / Carr Woodland	LE 6.11 Water Bodies - Standing Water	LE 8.3 Woodland Mitigation Planting	Flood Compensation Areas (E 2-FCA)	E 3.2 Ecological Culvert
LE 1.31 Species Rich Chalk Grassland	LE 2.2 Woodland Edge	LE 6.12 Water Bodies and Associated Plants - Shallow Scrape	LE 8.4 Wetland / Farmland Creation	Flood Defence (E 2-FD)	E 3.2 Bat Barn Block
LE 1.32 Species Rich Annual Wildflower Grassland	LE 2.22 Scrub Woodland	LE 6.2 Banks and Ditches	LE 8.5 Ecology Pond (indicative symbol only)		
LE 1.4 Rock and Scree	LE 2.4 Linear Belt of Shrubs and Trees	LE 6.21 Banks and Ditches - High Tide Root Features	LE 8.6 Acid Grassland Soil Salvage		
		Hedges (LE 4)			
		LE 4.3 Native Species Hedge (untrimmed)			
		LE 4.4 Native Hedgerow With Trees			
		Hard Landscape Features (LE 7)			
		LE 7.4 Reinforced Earth Band			
		Earthworks			
		Proposed Contours			

Client: **national highways**

Project: **LOWER THAMES CROSSING**

Status: PINS Submission	Original Size: A1	Revision: P02
Application Document Number: TR010032/APP/6.2	Scale: 1:1250	
Drawing title: ENVIRONMENTAL MASTERPLAN SECTION 3 SHEET 1		
Drawing Number: HE540039-CJV-EGN-S03_EN000000_Z-DR-ZZ-00002		

HE540039-CJV-EGN-S03_EN000000_Z-DR-ZZ-00002.dwg



Environmental Mitigation Legend: Refer to Main Legend for baseline and scheme features (Dwg: HE540039-CJV-EGN-SZZ_EN000000_Z-DR-ZZ-00001).

Order Limits Permanent Acquisition of Land Grassland (LE 1) LE 1.3 Species Rich Grassland LE 1.31 Species Rich Chalk Grassland LE 1.32 Species Rich Annual Wildflower Grassland LE 1.4 Rock and Scree	Planting (LE 2) LE 2.1 Woodland LE 2.11 Woodland With Non-Native Species LE 2.14 Wet / Carr Woodland LE 2.2 Woodland Edge LE 2.22 Scrub Woodland LE 2.4 Linear Belt of Shrubs and Trees LE 2.5 Shrubs With Intermittent Trees LE 2.7 Scattered Trees LE 2.8 Scrub / Scattered Scrub Hedges (LE 4) LE 4.3 Native Species Hedge (untrimmed) LE 4.4 Native Hedgerow With Trees	Individual Trees (LE 5) LE 5.1 Individual Trees Wetland Habitats (LE 6) LE 6.11 Water Bodies - Standing Water LE 6.12 Water Bodies and Associated Plants - Shallow Scrape LE 6.2 Banks and Ditches LE 6.21 Banks and Ditches - High Tide Roost Features LE 6.4 Wet Grassland LE 6.41 Marsh and Wet Grassland - Coastal Grazing Marsh Hard Landscape Features (LE 7) LE 7.4 Reinforced Earth Bund Earthworks Proposed Contours	Ecological Habitats (LE 8) LE 8.1 Open Mosaic Habitat LE 8.2 Ancient Woodland Compensation Planting LE 8.3 Woodland Mitigation Planting LE 8.4 Wetland / Fenland Creation LE 8.5 Ecology Pond (indicative symbol only) LE 8.6 Acid Grassland Soil Salvage Noise (E 1) E 1.2 Acoustic Barrier-Built Elements (typically inc. highway boundary fence) Water (E 2) Flood Compensation Areas (E 2-FCA) Flood Defence (E 2-FD)	Ecological (E 3) E 3.2 Ecological Habitat Creation and Receptor sites for Protected Species E 3.2 Dormouse Boxes E 3.2 Bat Boxes E 3.2 Ecological Culvert E 3.2 Bat Barn Block E 3.2 Ecological Fencing (inc. highway boundary fence) E 3.2 Barn Owl Box
---	---	---	---	--

Client: **national highways**

Project: **LOWER THAMES CROSSING**

Status	PINS Submission	Original Size	A1	Revision	P02
Application Document Number	TR010032/APP/6.2	Scale	1:1250		
Drawing Title	ENVIRONMENTAL MASTERPLAN SECTION 3 SHEET 2				
Drawing Number	HE540039-CJV-EGN-S03_EN000000_Z-DR-ZZ-00003				



Contains Ordnance Survey data. © Crown copyright and database rights 2022. Ordnance Survey 100030649

0 10 20 30 40 50 60 70 80 90 100 METRES

SCALE 1:1250 (A1)
SCALE 1:2500 (A3)

Section Overview Sheet: Refer to section overview plan at the start of the section.

P01	S2	27/10/2022	DCO Application	SA	PS	MH
P02	S9	19/07/2023	Deadline 2	LD	SK	BF

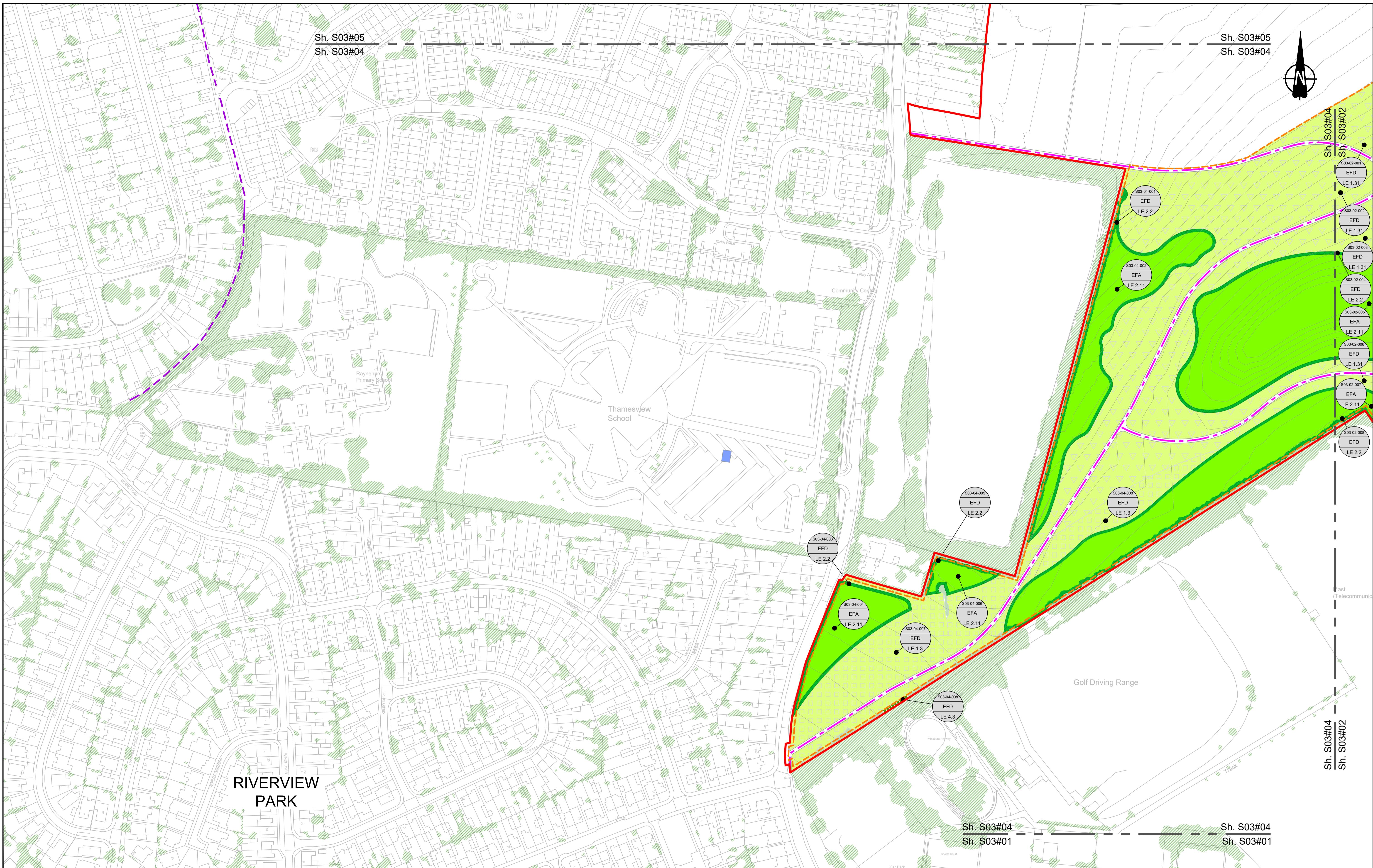
Rev	Status	Rev. Date	Purpose of revision	Drawn	Chk'd	Apprv'd

Environmental Mitigation Legend: Refer to Main Legend for baseline and scheme features (Dwg: HE540039-CJV-EGN-SZZ_EN000000_Z-DR-ZZ-00001).	
Order Limits	Planting (LE 2)
Permanent Acquisition of Land	LE 2.1 Woodland
Grassland (LE 1)	LE 2.11 Woodland With Non-Native Species
LE 1.3 Species Rich Grassland	LE 2.14 Wet / Carr Woodland
LE 1.31 Species Rich Chalk Grassland	LE 2.2 Woodland Edge
LE 1.32 Species Rich Annual Wildflower Grassland	LE 2.22 Scrub Woodland
LE 1.4 Rock and Scree	LE 2.4 Linear Belt of Shrubs and Trees
LE 2.5 Shrubs With Intermittent Trees	LE 2.7 Scattered Trees
LE 2.8 Scrub / Scattered Scrub	Hedges (LE 4)
LE 2.22 Scrub Woodland	LE 4.3 Native Species Hedge (untrimmed)
LE 2.4 Native Hedgerow With Trees	LE 4.4 Native Hedgerow With Trees
LE 2.5 Scattered Trees	Individual Trees (LE 6)
LE 2.7 Scattered Trees	LE 5.1 Individual Trees
LE 2.8 Scrub / Scattered Scrub	Wetland Habitats (LE 6)
Hedges (LE 4)	LE 6.11 Water Bodies - Standing Water
LE 4.3 Native Species Hedge (untrimmed)	LE 6.12 Water Bodies and Associated Plants - Shallow Scraps
LE 4.4 Native Hedgerow With Trees	LE 6.2 Banks and Ditches
LE 5.1 Individual Trees	LE 6.21 Banks and Ditches - High Tide Root Features
Wetland Habitats (LE 6)	LE 6.4 Wet Grassland
LE 6.11 Water Bodies - Standing Water	LE 6.41 Marsh and Wet Grassland - Coastal Grazing Marsh
LE 6.12 Water Bodies and Associated Plants - Shallow Scraps	Hard Landscape Features (LE 7)
LE 6.2 Banks and Ditches	LE 7.4 Reinforced Earth Bund
LE 6.21 Banks and Ditches - High Tide Root Features	Earthworks
LE 6.4 Wet Grassland	Proposed Contours
LE 6.41 Marsh and Wet Grassland - Coastal Grazing Marsh	Ecological Habitats (LE 8)
Hard Landscape Features (LE 7)	LE 8.1 Open Mosaic Habitat
Earthworks	LE 8.2 Ancient Woodland Compensation Planting
Proposed Contours	LE 8.3 Woodland Mitigation Planting
Ecological Habitats (LE 8)	LE 8.4 Wetland / Fenland Creation
LE 8.1 Open Mosaic Habitat	LE 8.5 Ecology Pond (indicative symbol only)
LE 8.2 Ancient Woodland Compensation Planting	LE 8.6 Acid Grassland Soil Salvage
LE 8.3 Woodland Mitigation Planting	Noise (E 1)
LE 8.4 Wetland / Fenland Creation	LE 8.7 Nitrogen Deposition (NDEP) Compensation Area
LE 8.5 Ecology Pond (indicative symbol only)	E 1.2 Acoustic Barrier-Built Elements (typically inc. highway boundary fence)
LE 8.6 Acid Grassland Soil Salvage	Water (E 2)
Noise (E 1)	E 2.1 Flood Compensation Areas (E 2-FCA)
LE 8.7 Nitrogen Deposition (NDEP) Compensation Area	E 2.2 Flood Defence (E 2-FD)
E 1.2 Acoustic Barrier-Built Elements (typically inc. highway boundary fence)	Ecological (E 3)
Water (E 2)	E 3.2 Ecological Habitat Creation and Receptor sites for Protected Species
E 2.1 Flood Compensation Areas (E 2-FCA)	E 3.2 Dormouse Boxes
E 2.2 Flood Defence (E 2-FD)	E 3.2 Bat Boxes
Ecological (E 3)	E 3.2 Ecological Culvert
E 3.2 Ecological Habitat Creation and Receptor sites for Protected Species	E 3.2 Bat Barn Block
E 3.2 Dormouse Boxes	E 3.2 Barn Owl Box
E 3.2 Bat Boxes	E 3.2 Ecological Fencing (inc. highway boundary fence)
E 3.2 Ecological Culvert	E 3.2 Ecological Fencing (inc. highway boundary fence)
E 3.2 Bat Barn Block	E 3.2 Ecological Fencing (inc. highway boundary fence)

Client: national highways

Project: LOWER THAMES CROSSING

Status: DCO Application	Original Size: A1	Revision: P02
Application Document Number: TR010032/APP/6.2	Scale: 1:1250	
Drawing title: ENVIRONMENTAL MASTERPLAN SECTION 3 SHEET 3		
Drawing Number: HE540039-CJV-EGN-S03_EN000000_Z-DR-ZZ-00004		
HE540039-CJV-EGN-S03_EN000000_Z-DR-ZZ-00004.dwg		



Contains Ordnance Survey data. © Crown copyright and database rights 2022. Ordnance Survey 10003049

0 10 20 30 40 50 60 70 80 90 100 METRES

SCALE 1:1250 (A1)
SCALE 1:2500 (A3)

Section Overview Sheet: Refer to section overview plan at the start of the section.

Rev	Status	Rev. Date	Purpose of revision	Drawn	Chkd	Apprv'd
P01.6	SO	08/08/2022		LD		

Environmental Mitigation Legend: Refer to Main Legend for baseline and scheme features (Dwg: HE540039-CJV-EGN-SZZ_EN000000_Z-DR-ZZ-00001).

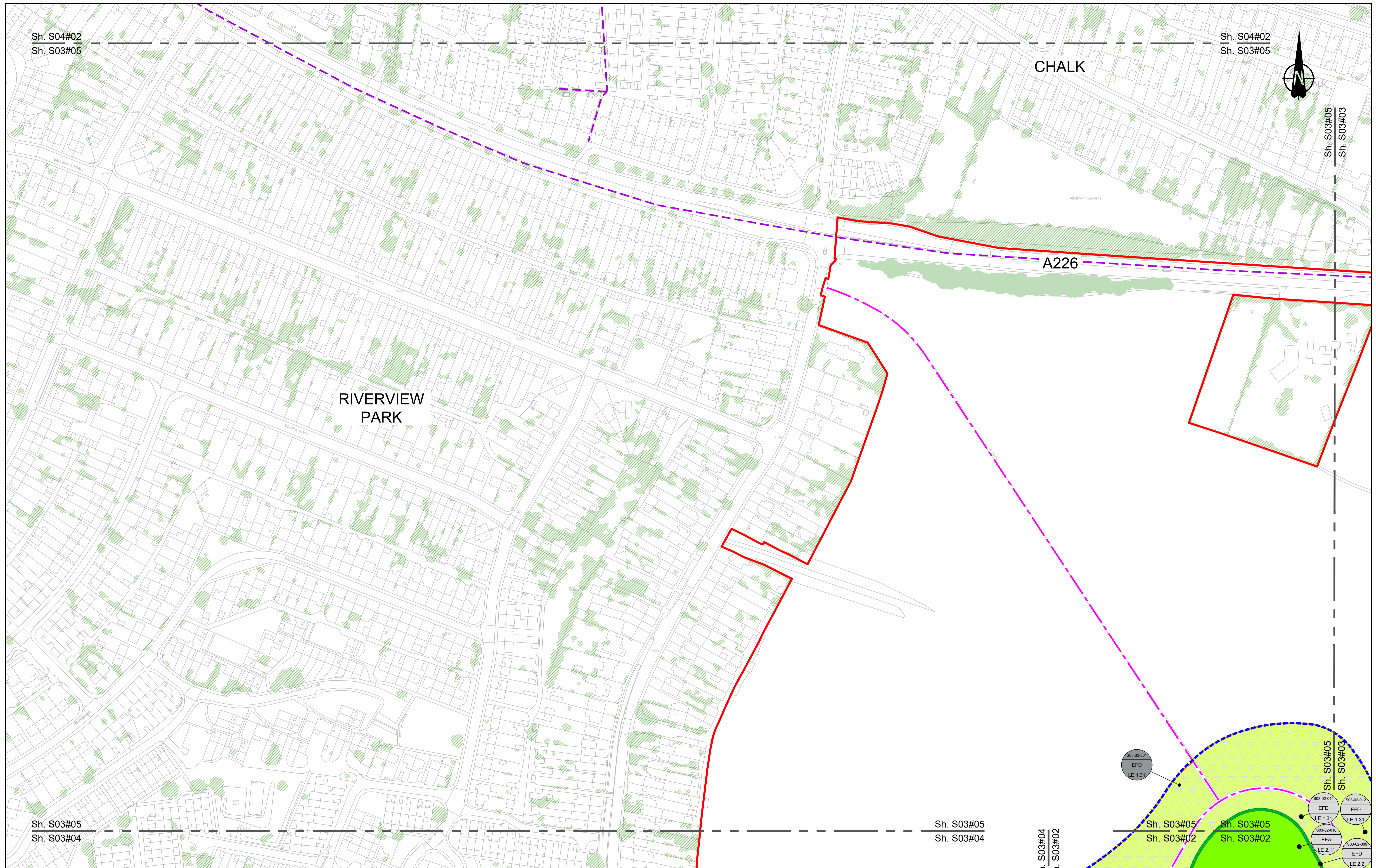
<p>Order Limits</p> <ul style="list-style-type: none"> Permanent Acquisition of Land <p>Grassland (LE 1)</p> <ul style="list-style-type: none"> LE 1.3 Species Rich Grassland LE 1.31 Species Rich Chalk Grassland LE 1.32 Species Rich Annual Wildflower Grassland LE 1.4 Rock and Scree 	<p>Planting (LE 2)</p> <ul style="list-style-type: none"> LE 2.1 Woodland LE 2.11 Woodland With Non-Native Species LE 2.14 Wet / Carr Woodland LE 2.2 Woodland Edge LE 2.22 Scrub Woodland LE 2.4 Linear Belt of Shrubs and Trees <p>Hedges (LE 4)</p> <ul style="list-style-type: none"> LE 4.3 Native Species Hedge (untrimmed) LE 4.4 Native Hedgerow With Trees 	<p>Individual Trees (LE 5)</p> <ul style="list-style-type: none"> LE 5.1 Individual Trees <p>Wetland Habitats (LE 6)</p> <ul style="list-style-type: none"> LE 6.11 Water Bodies - Standing Water LE 6.12 Water Bodies and Associated Plants - Shallow Scrape LE 6.2 Banks and Ditches LE 6.21 Banks and Ditches - High Tide Root Features 	<p>Wet Grassland</p> <ul style="list-style-type: none"> LE 6.4 Wet Grassland <p>Marsh and Wet Grassland - Coastal Grazing Marsh</p> <ul style="list-style-type: none"> LE 6.41 Marsh and Wet Grassland - Coastal Grazing Marsh <p>Hard Landscape Features (LE 7)</p> <ul style="list-style-type: none"> LE 7.4 Reinforced Earth Band <p>Earthworks</p> <ul style="list-style-type: none"> Proposed Contours 	<p>Ecological Habitats (LE 8)</p> <ul style="list-style-type: none"> LE 8.1 Open Mosaic Habitat LE 8.2 Ancient Woodland Compensation Planting LE 8.3 Woodland Mitigation Planting LE 8.4 Wetland / Farmland Creation LE 8.5 Ecology Pond (indicative symbol only) LE 8.6 Acid Grassland Soil Salvage 	<p>Ecological (E 3)</p> <ul style="list-style-type: none"> E 3.2 Ecological Habitat Creation and Receptor sites for Protected Species E 3.2 Dormouse Boxes E 3.2 Bat Boxes E 3.2 Ecological Culvert E 3.2 Bat Barn Block 	<p>Noise (E 1)</p> <ul style="list-style-type: none"> E 1.2 Acoustic Barrier-Built Elements (typically inc. highway boundary fence) <p>Water (E 2)</p> <ul style="list-style-type: none"> E 2.2 Flood Compensation Areas (E 2-FCA) E 2.5 Ecology Pond (indicative symbol only) E 2.5 Flood Defence (E 2-FD) 	<p>Ecological (E 3)</p> <ul style="list-style-type: none"> E 3.2 Ecological Habitat Creation and Receptor sites for Protected Species E 3.2 Ecological Fencing (inc. highway boundary fence) E 3.2 Barn Owl Box
--	---	---	---	---	--	---	---

Client: **national highways**

Project: **LOWER THAMES CROSSING**

Status	Initial Status or WIP	Original Size	Revision
Application Document Number	TR010032/APP/6.2	A1	P01.6
Scale	1:1250		
Drawing title	ENVIRONMENTAL MASTERPLAN SECTION 3 SHEET 4		
Drawing Number	HE540039-CJV-EGN-S03_EN000000_Z-DR-ZZ-00005		

HE540039-CJV-EGN-S03_EN000000_Z-DR-ZZ-00005.dwg



Contains Ordnance Survey data. © Crown copyright and database rights 2022. Ordnance Survey 100038649

0 10 20 30 40 50 60 70 80 90 100 METRES

SCALE 1:1250 (A1)
SCALE 1:2500 (A3)

Section Overview Sheet: Refer to section overview plan at the start of the section.

P01.5 SD 08/08/2022 LD

Rev	Status	Rev. Date	Purpose of revision	Drawn	Check'd	Apprv'd

Environmental Mitigation Legend: Refer to Main Legend for baseline and scheme features (Dwg: HE540039-CJV-EGN-SZZ_EN000000_Z-DR-ZZ-00001).

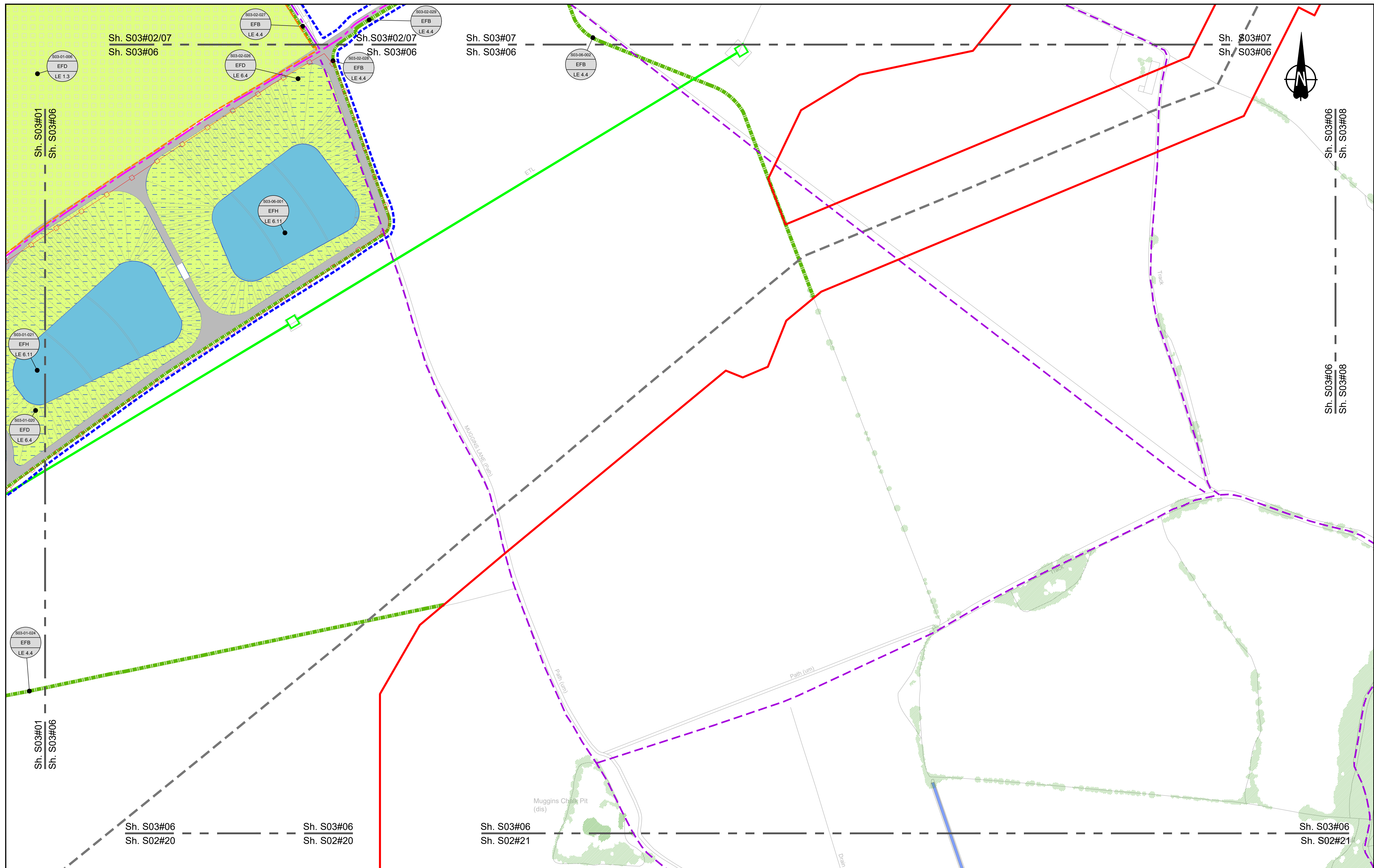
<p>Order Limits</p> <ul style="list-style-type: none"> Order Limits Permanent Acquisition of Land <p>Grassland (LE 1)</p> <ul style="list-style-type: none"> LE 1.3 Species Rich Chalk Grassland LE 1.32 Species Rich Annual Wildflower Grassland LE 1.4 Rock and Scree 	<p>Planting (LE 2)</p> <ul style="list-style-type: none"> LE 2.1 Woodland LE 2.11 Woodland With Non-Native Species LE 2.14 Wet / Carr Woodland LE 2.2 Woodland Edge LE 2.22 Scrub Woodland LE 2.4 Linear Belt of Shrubs and Trees 	<p>Individual Trees (LE 5)</p> <ul style="list-style-type: none"> LE 5.1 Individual Trees <p>Wetland Habitats (LE 6)</p> <ul style="list-style-type: none"> LE 6.11 Water Bodies - Standing Water LE 6.12 Water Bodies and Associated Plants - Shallow Scrape LE 6.2 Banks and Ditches LE 6.21 Banks and Ditches - High Tide Roost Features 	<p>Wet Grassland</p> <ul style="list-style-type: none"> LE 6.4 Wet Grassland LE 6.41 Marsh and Wet Grassland - Coastal Grazing Marsh <p>Hard Landscape Features (LE 7)</p> <ul style="list-style-type: none"> LE 7.4 Reinforced Earth Bund <p>Earthworks</p> <ul style="list-style-type: none"> Proposed Contours 	<p>Ecological Habitats (LE 8)</p> <ul style="list-style-type: none"> LE 8.1 Open Mosaic Habitat LE 8.2 Ancient Woodland Compensation Planting LE 8.3 Woodland Mitigation Planting LE 8.4 Wetland / Fenland Creation LE 8.5 Ecology Pond (indicative symbol only) LE 8.6 Acid Grassland Soil Salvage 	<p>Noise (E 1)</p> <ul style="list-style-type: none"> LE 8.7 Nitrogen Deposition (NDEP) Compensation Area E 1.2 Acoustic Barrier-Built Elements (typically inc. highway boundary fence) <p>Water (E 2)</p> <ul style="list-style-type: none"> Flood Compensation Areas (E 2-FCA) Flood Defence (E 2-FD) 	<p>Ecological (E 3)</p> <ul style="list-style-type: none"> E 3.2 Ecological Habitat Creation and Receptor Sites for Protected Species E 3.2 Dormouse Boxes E 3.2 Bat Boxes E 3.2 Ecological Culvert E 3.2 Bat Barn Block E 3.2 Ecological Fencing (inc. highway boundary fence) E 3.2 Barn Owl Box
--	--	--	--	--	---	--

national highways

Project LOWER THAMES CROSSING

Status	Initial Status or WIP	Original Size	Revision
Application Document Number	TR010032/APP/6.2	A1	P01.5
Scale	1:1250		
Drawing Title	ENVIRONMENTAL MASTERPLAN SECTION 3 SHEET 5		
Drawing Number	HE540039-CJV-EGN-S03_EN000000_Z-DR-ZZ-00006		

HE540039-CJV-EGN-S03_EN000000_Z-DR-ZZ-00006.dwg



Contains Ordnance Survey data. © Crown copyright and database rights 2022. Ordnance Survey 100036649

0 10 20 30 40 50 60 70 80 90 100 METRES

SCALE 1:1250 (A1)
SCALE 1:2500 (A3)

Section Overview Sheet: Refer to section overview plan at the start of the section.

Rev	Status	Rev. Date	Purpose of revision	Drawn	Chck'd	Apprv'd
P01.5	SO	12/05/2022				

Environmental Mitigation Legend: Refer to Main Legend for baseline and scheme features (Dwg: HE540039-CJV-EGN-SZ3_EN000000_Z-DR-ZZ-00001).

Grassland (LE 1)	Planting (LE 2)	Individual Trees (LE 5)	Wetland Habitats (LE 6)	Hard Landscape Features (LE 7)	Earthworks
LE 1.31 Species Rich Chalk Grassland	LE 2.1 Woodland	LE 5.1 Individual Trees	LE 6.11 Water Bodies - Standing Water	LE 7.4 Reinforced Earth Bund	Proposed Contours
LE 1.32 Species Rich Annual Wildflower Grassland	LE 2.11 Woodland With Non-Native Species	LE 5.2 Shrubs With Intermittent Trees	LE 6.12 Water Bodies and Associated Plants - Shallow Scrape	LE 7.4.1 Reinforced Earth Bund	
LE 1.4 Rock and Scree	LE 2.2 Woodland Edge	LE 5.3 Scattered Trees	LE 6.2 Banks and Ditches		
	LE 2.22 Scrub Woodland	LE 5.4 Hedgerow With Intermittent Trees	LE 6.21 Banks and Ditches - High Tide Root Features		
	LE 2.4 Linear Belt of Shrubs and Trees	LE 5.5 Native Species Hedge (untrimmed)			
		LE 5.6 Native Hedgerow With Trees			

Ecological Habitats (LE 8)	Noise (E 1)	Water (E 2)	Ecological (E 3)
LE 8.1 Open Mosaic Habitat	LE 8.7 Nitrogen Deposition (NDEP) Compensation Area	LE 2.1 Acoustic Barrier-Built Elements (typically inc. highway boundary fence)	E 3.2 Ecological Habitat Creation and Receptor sites for Protected Species
LE 8.2 Ancient Woodland Compensation Planting	E 1.2 Acoustic Barrier-Built Elements (typically inc. highway boundary fence)	E 2.1 Flood Compensation Areas (E 2-FCA)	E 3.2 Dormouse Boxes
LE 8.3 Woodland Mitigation Planting	E 2.2 Flood Compensation Areas (E 2-FCA)	LE 8.5 Ecology Pond (indicative symbol only)	E 3.2 Bat Boxes
LE 8.4 Wetland / Fenland Creation	Flood Defence (E 2-FD)	LE 8.6 Acid Grassland Soil Salvage	E 3.2 Ecological Culvert
LE 8.5 Ecology Pond (indicative symbol only)			E 3.2 Bat Barn Block
LE 8.6 Acid Grassland Soil Salvage			E 3.2 Barn Owl Box
			E 3.2 Ecological Fencing (inc. highway boundary fence)

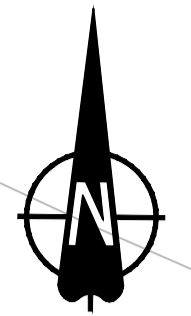
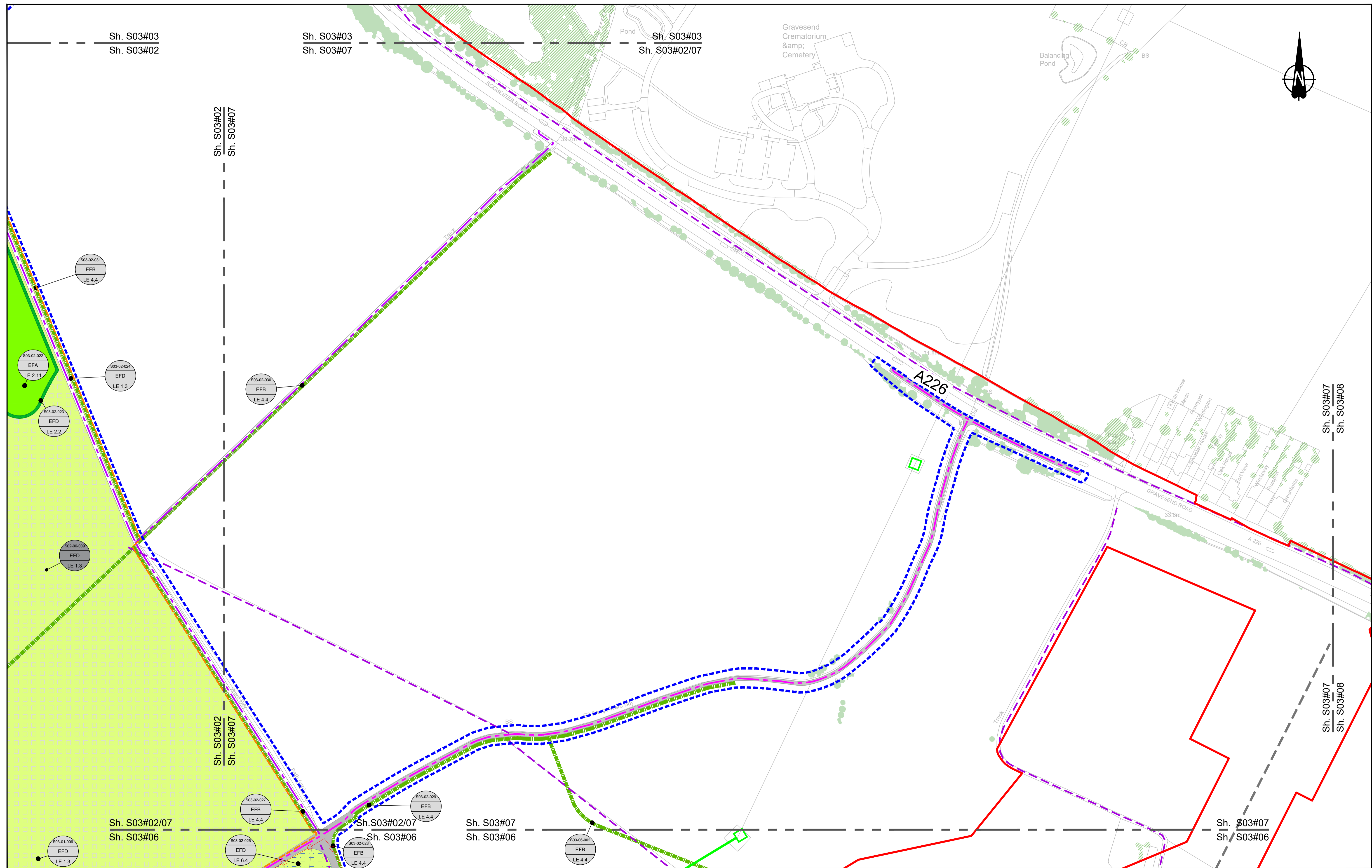
Client	Project
national highways	LOWER THAMES CROSSING

Status	Application Document Number	Drawing Title	Drawing Number
Initial Status or WIP	TR010032/APP/6.2	ENVIRONMENTAL MASTERPLAN SECTION 3 SHEET 6	HE540039-CJV-EGN-S03_EN000000_Z-DR-ZZ-00007

Original Size	Revision
A1	P01.5

Scale: 1:1250

HE540039-CJV-EGN-S03_EN000000_Z-DR-ZZ-00007.dwg



Contains Ordnance Survey data. © Crown copyright and database rights 2022. Ordnance Survey 100039649

0 10 20 30 40 50 60 70 80 90 100 METRES

SCALE 1:1250 (A1)
SCALE 1:2500 (A3)

Section Overview Sheet: Refer to section overview plan at the start of the section.

Rev	Status	Rev. Date	Purpose of revision	Drawn	Check'd	Apprv'd
P01.6	SO	08/08/2022				LD

Environmental Mitigation Legend: Refer to Main Legend for baseline and scheme features (Dwg: HE540039-CJV-EGN-SZZ_EN000000_Z-DR-ZZ-00001).

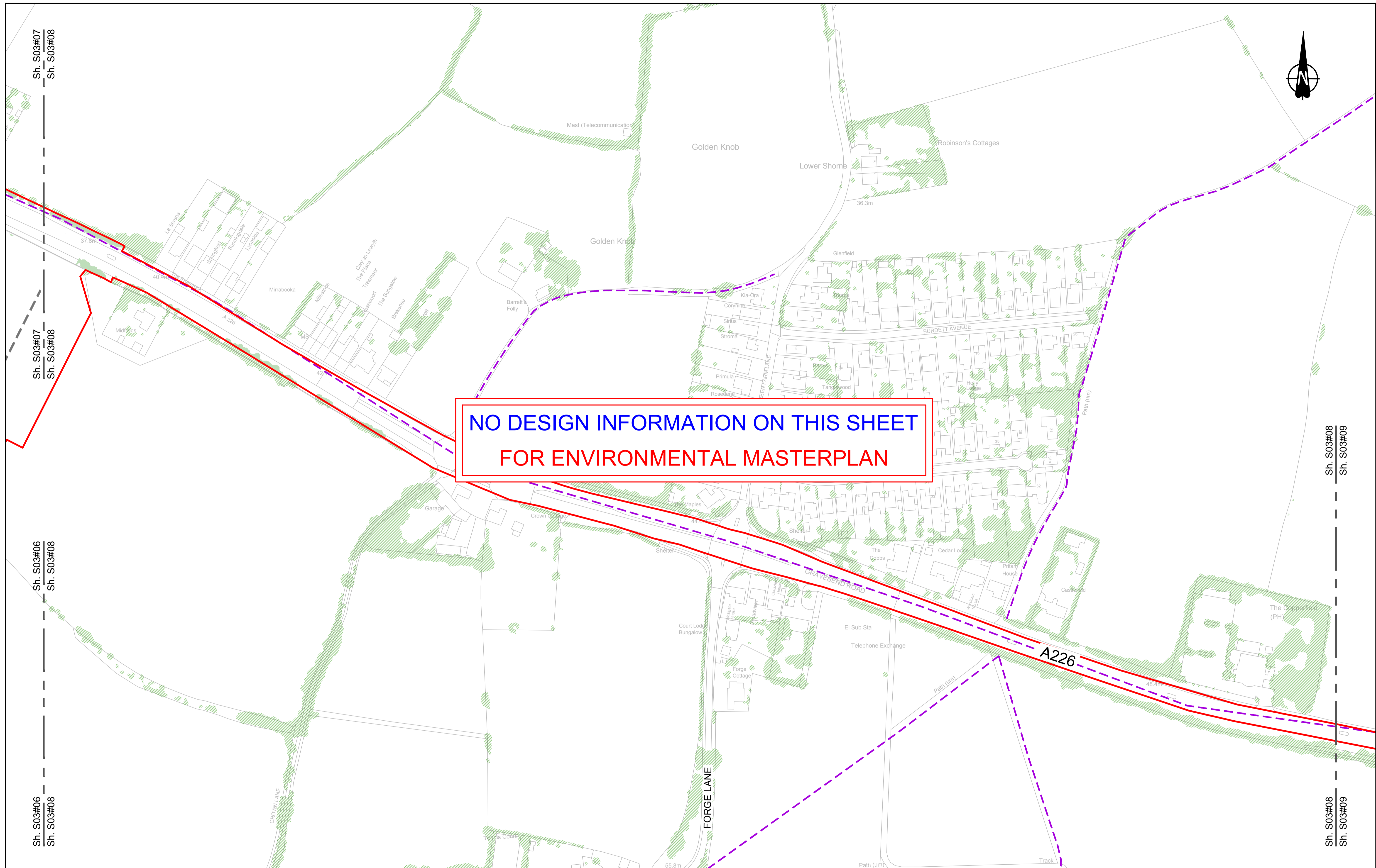
Order Limits Order Limits Permanent Acquisition of Land Grassland (LE 1) LE 1.3 Species Rich Grassland LE 1.31 Species Rich Chalk Grassland LE 1.32 Species Rich Annual Wildflower Grassland LE 1.4 Rock and Scree	Planting (LE 2) LE 2.1 Woodland LE 2.11 Woodland With Non-Native Species LE 2.14 Wet / Carr Woodland LE 2.2 Woodland Edge LE 2.22 Scrub Woodland LE 2.4 Linear Belt of Shrubs and Trees Hedges (LE 4) LE 4.3 Native Species Hedge (untrimm'd) LE 4.4 Native Hedgerow With Trees	Individual Trees (LE 5) LE 5.1 Individual Trees Wetland Habitats (LE 6) LE 6.11 Water Bodies - Standing Water LE 6.12 Water Bodies and Associated Plants - Shallow Scrape LE 6.2 Banks and Ditches LE 6.21 Banks and Ditches - High Tide Roost Features Wetland Habitats (LE 6) LE 6.4 Marsh and Wet Grassland - Coastal Grazing Marsh Hard Landscape Features (LE 7) LE 7.4 Reinforced Earth Bund Earthworks Proposed Contours	Ecological Habitats (LE 8) LE 8.1 Open Mosaic Habitat LE 8.2 Ancient Woodland Compensation Planting LE 8.3 Woodland Mitigation Planting LE 8.4 Wetland / Fenland Creation LE 8.5 Ecology Pond (indicative symbol only) LE 8.6 Acid Grassland Soil Salvage Noise (E 1) LE 8.7 Nitrogen Deposition (NDEP) Compensation Area E 1.2 Acoustic Barrier-Built Elements (typically inc. highway boundary fence) Water (E 2) Flood Compensation Areas (E 2-FCA) Flood Defence (E 2-FD)	Ecological (E 3) E 3.2 Ecological Habitat Creation and Receptor sites for Protected Species E 3.2 Dormouse Boxes E 3.2 Bat Boxes E 3.2 Ecological Culvert E 3.2 Bat Barn Block E 3.2 Barn Owl Box E 3.2 Ecological Fencing (inc. highway boundary fence)
---	--	--	--	--

Client: national highways

Project: LOWER THAMES CROSSING

Status	Initial Status or WIP	Original Size	Revision
Application Document Number	TR010032/APP/6.2	A1	P01.6
Scale	1:1250		
Drawing Title	ENVIRONMENTAL MASTERPLAN SECTION 3 SHEET 7		
Drawing Number	HE540039-CJV-EGN-S03_EN000000_Z-DR-ZZ-00008		

HE540039-CJV-EGN-S03_EN000000_Z-DR-ZZ-00008.dwg



NO DESIGN INFORMATION ON THIS SHEET
FOR ENVIRONMENTAL MASTERPLAN

Contains Ordnance Survey data. © Crown copyright and database rights 2022. Ordnance Survey 100030649

0 10 20 30 40 50 60 70 80 90 100 METRES

SCALE 1:1250 (A1)
SCALE 1:2500 (A3)

Section Overview Sheet: Refer to section overview plan at the start of the section.

P01.6 SO 28/07/2022

Rev	Status	Rev. Date	Purpose of revision	Drawn	Check'd	Apprv'd

Environmental Mitigation Legend: Refer to Main Legend for baseline and scheme features (Dwg: HE540039-CJV-EGN-SZZ_EN000000_Z-DR-ZZ-00001).

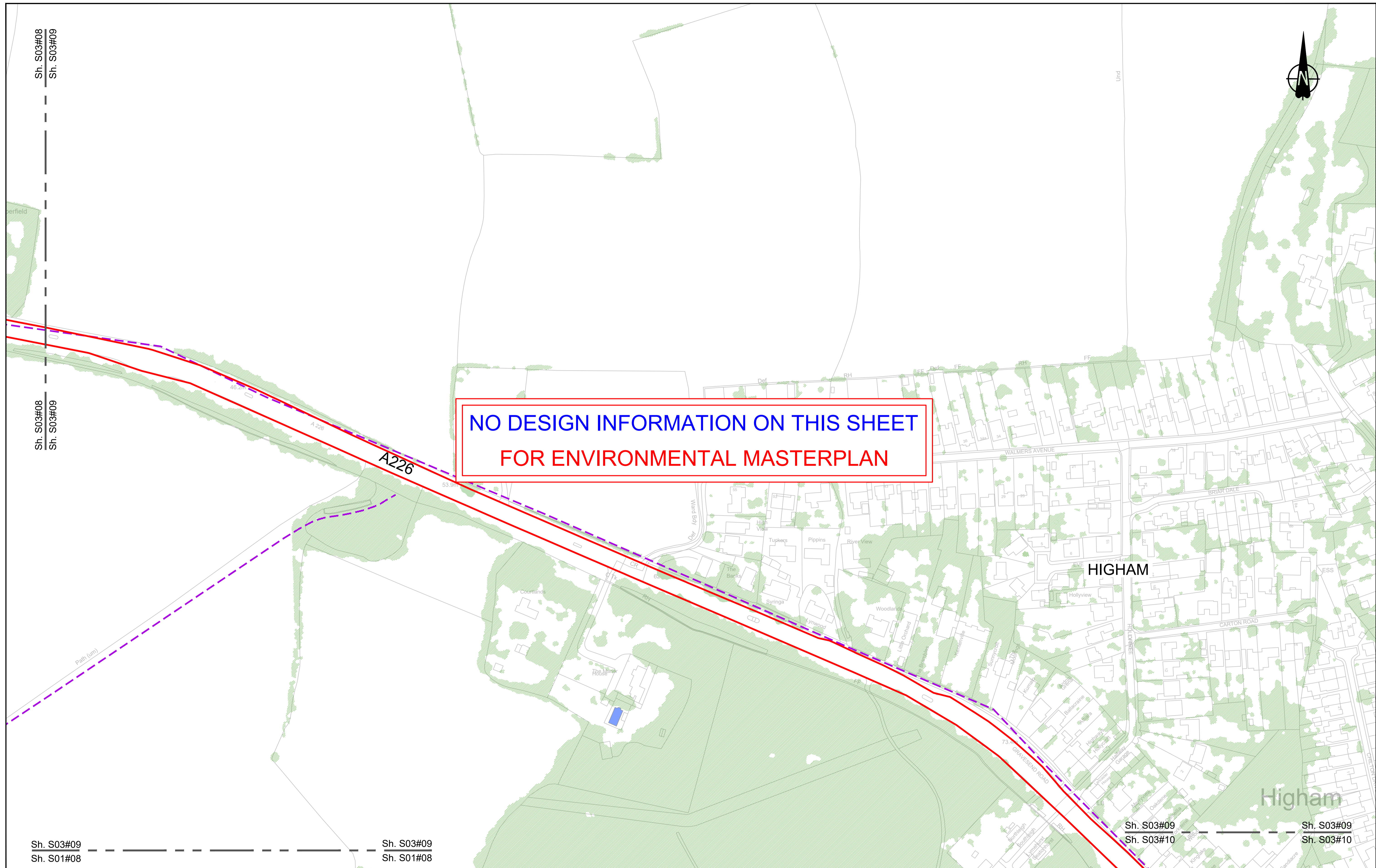
Grassland (LE 1)	Planting (LE 2)	Individual Trees (LE 5)	Ecological Habitats (LE 8)	Noise (E 1)	Water (E 2)
LE 1.3 Species Rich Grassland	LE 2.1 Woodland	LE 5.1 Individual Trees	LE 8.1 Open Mosaic Habitat	LE 1.2 Acoustic Barrier-Built Elements (typically inc. highway boundary fence)	LE 2.1 Nitrogen Deposition (NDEP) Compensation Area
LE 1.31 Species Rich Chalk Grassland	LE 2.11 Woodland With Non-Native Species	LE 5.2 Wet Grassland	LE 8.2 Ancient Woodland Compensation Planting	LE 1.2.1 Acoustic Barrier-Built Elements (typically inc. highway boundary fence)	LE 2.2 Flood Compensation Areas (E 2-FCA)
LE 1.32 Species Rich Annual Wildflower Grassland	LE 2.14 Wet / Carr Woodland	LE 5.3 Wet Grassland - Coastal Grazing Marsh	LE 8.3 Woodland Mitigation Planting	LE 2.2.1 Flood Compensation Areas (E 2-FCA)	LE 2.2.2 Flood Defence (E 2-FD)
LE 1.4 Rock and Scree	LE 2.2 Woodland Edge	LE 5.4 Marsh and Wet Grassland - Coastal Grazing Marsh	LE 8.4 Wetland / Fenland Creation		
	LE 2.22 Scrub Woodland	LE 5.5 Shrub Scrub / Scattered Scrub	LE 8.5 Ecology Pond (indicative symbol only)		
	LE 2.4 Linear Belt of Shrubs and Trees	LE 5.6 Scattered Trees	LE 8.6 Acid Grassland Soil Salvage		
		LE 5.7 Scattered Trees			
		LE 5.8 Scattered Trees			
		LE 5.9 Scattered Trees			
		LE 5.10 Scattered Trees			
		LE 5.11 Scattered Trees			
		LE 5.12 Scattered Trees			
		LE 5.13 Scattered Trees			
		LE 5.14 Scattered Trees			
		LE 5.15 Scattered Trees			
		LE 5.16 Scattered Trees			
		LE 5.17 Scattered Trees			
		LE 5.18 Scattered Trees			
		LE 5.19 Scattered Trees			
		LE 5.20 Scattered Trees			
		LE 5.21 Scattered Trees			
		LE 5.22 Scattered Trees			
		LE 5.23 Scattered Trees			
		LE 5.24 Scattered Trees			
		LE 5.25 Scattered Trees			
		LE 5.26 Scattered Trees			
		LE 5.27 Scattered Trees			
		LE 5.28 Scattered Trees			
		LE 5.29 Scattered Trees			
		LE 5.30 Scattered Trees			
		LE 5.31 Scattered Trees			
		LE 5.32 Scattered Trees			
		LE 5.33 Scattered Trees			
		LE 5.34 Scattered Trees			
		LE 5.35 Scattered Trees			
		LE 5.36 Scattered Trees			
		LE 5.37 Scattered Trees			
		LE 5.38 Scattered Trees			
		LE 5.39 Scattered Trees			
		LE 5.40 Scattered Trees			
		LE 5.41 Scattered Trees			
		LE 5.42 Scattered Trees			
		LE 5.43 Scattered Trees			
		LE 5.44 Scattered Trees			
		LE 5.45 Scattered Trees			
		LE 5.46 Scattered Trees			
		LE 5.47 Scattered Trees			
		LE 5.48 Scattered Trees			
		LE 5.49 Scattered Trees			
		LE 5.50 Scattered Trees			
		LE 5.51 Scattered Trees			
		LE 5.52 Scattered Trees			
		LE 5.53 Scattered Trees			
		LE 5.54 Scattered Trees			
		LE 5.55 Scattered Trees			
		LE 5.56 Scattered Trees			
		LE 5.57 Scattered Trees			
		LE 5.58 Scattered Trees			
		LE 5.59 Scattered Trees			
		LE 5.60 Scattered Trees			
		LE 5.61 Scattered Trees			
		LE 5.62 Scattered Trees			
		LE 5.63 Scattered Trees			
		LE 5.64 Scattered Trees			
		LE 5.65 Scattered Trees			
		LE 5.66 Scattered Trees			
		LE 5.67 Scattered Trees			
		LE 5.68 Scattered Trees			
		LE 5.69 Scattered Trees			
		LE 5.70 Scattered Trees			
		LE 5.71 Scattered Trees			
		LE 5.72 Scattered Trees			
		LE 5.73 Scattered Trees			
		LE 5.74 Scattered Trees			
		LE 5.75 Scattered Trees			
		LE 5.76 Scattered Trees			
		LE 5.77 Scattered Trees			
		LE 5.78 Scattered Trees			
		LE 5.79 Scattered Trees			
		LE 5.80 Scattered Trees			
		LE 5.81 Scattered Trees			
		LE 5.82 Scattered Trees			
		LE 5.83 Scattered Trees			
		LE 5.84 Scattered Trees			
		LE 5.85 Scattered Trees			
		LE 5.86 Scattered Trees			
		LE 5.87 Scattered Trees			
		LE 5.88 Scattered Trees			
		LE 5.89 Scattered Trees			
		LE 5.90 Scattered Trees			
		LE 5.91 Scattered Trees			
		LE 5.92 Scattered Trees			
		LE 5.93 Scattered Trees			
		LE 5.94 Scattered Trees			
		LE 5.95 Scattered Trees			
		LE 5.96 Scattered Trees			
		LE 5.97 Scattered Trees			
		LE 5.98 Scattered Trees			
		LE 5.99 Scattered Trees			
		LE 5.100 Scattered Trees			

Client: **national highways**

Project: **LOWER THAMES CROSSING**

Status	Initial Status or WIP	Original Size	A1	Revision	P01.6
Application Document Number	TR010032/APP/6.2	Scale	1:1250		
Drawing Title	ENVIRONMENTAL MASTERPLAN SECTION 3 SHEET 8				
Drawing Number	HE540039-CJV-EGN-S03_EN000000_Z-DR-ZZ-00009				

HE540039-CJV-EGN-S03_EN000000_Z-DR-ZZ-00009.dwg



NO DESIGN INFORMATION ON THIS SHEET
FOR ENVIRONMENTAL MASTERPLAN

Contains Ordnance Survey data. © Crown copyright and database rights 2022. Ordnance Survey 100030649

0 10 20 30 40 50 60 70 80 90 100
SCALE 1:1250 (A1)
SCALE 1:2500 (A3)
METRES

Section Overview Sheet: Refer to section overview plan at the start of the section.

Rev	Status	Rev. Date	Purpose of revision	Drawn	Chkd	Apprv'd
P01.6	SO	28/07/2022				

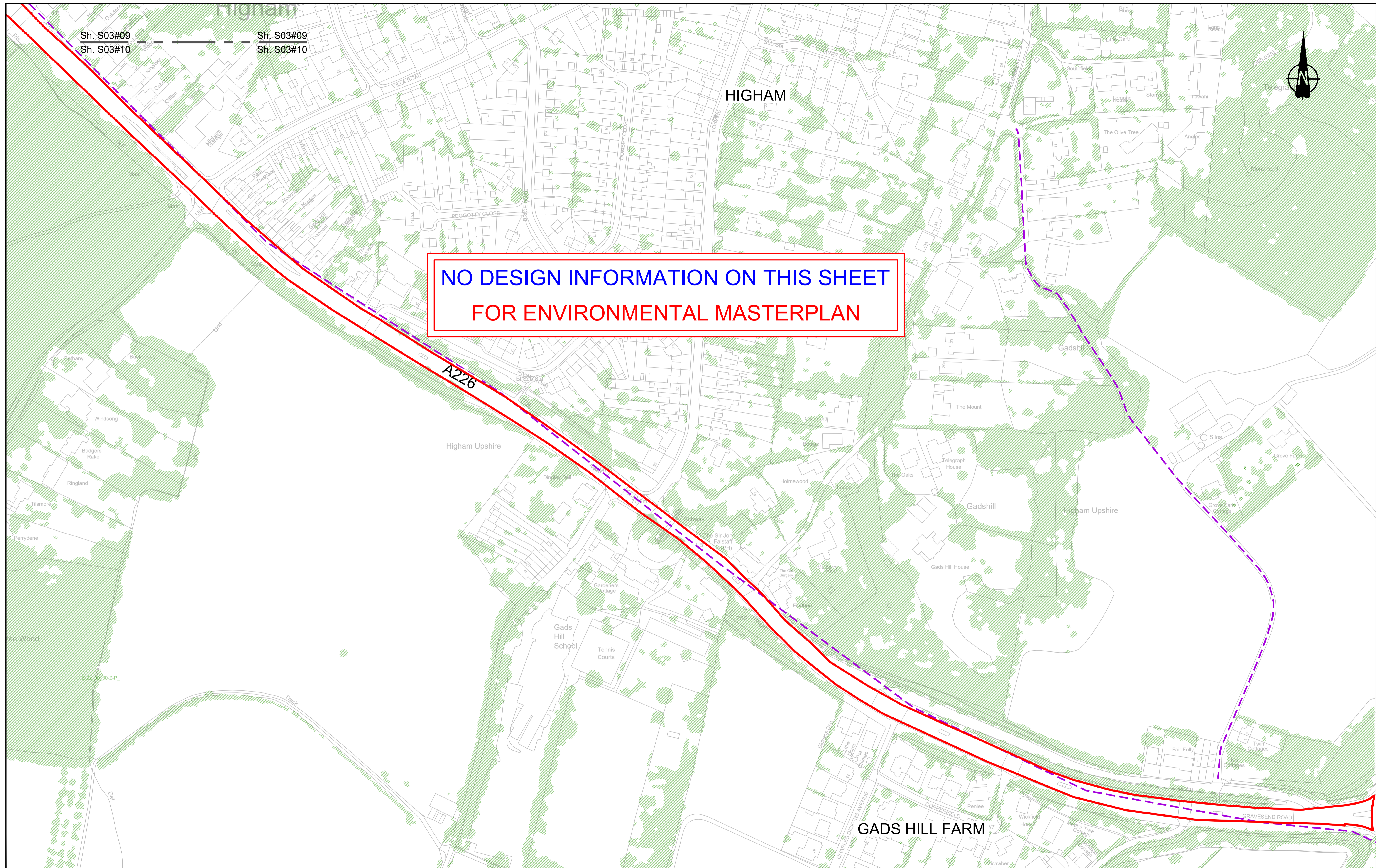
Environmental Mitigation Legend: Refer to Main Legend for baseline and scheme features (Dwg: HE540039-CJV-EGN-SZZ_EN000000_Z-DR-ZZ-00001).

<p>Order Limits</p> <ul style="list-style-type: none"> Permanent Acquisition of Land <p>Grassland (LE 1)</p> <ul style="list-style-type: none"> LE 1.3 Species Rich Grassland LE 1.31 Species Rich Chalk Grassland LE 1.32 Species Rich Annual Wildflower Grassland LE 1.4 Rock and Scree 	<p>Planting (LE 2)</p> <ul style="list-style-type: none"> LE 2.1 Woodland LE 2.11 Woodland With Non-Native Species LE 2.14 Wet / Carr Woodland LE 2.2 Woodland Edge LE 2.22 Scrub Woodland LE 2.4 Linear Belt of Shrubs and Trees <p>Hedges (LE 4)</p> <ul style="list-style-type: none"> LE 4.3 Native Species Hedge (untrimm'd) LE 4.4 Native Hedgerow With Trees 	<p>Individual Trees (LE 5)</p> <ul style="list-style-type: none"> LE 5.1 Individual Trees <p>Wetland Habitats (LE 6)</p> <ul style="list-style-type: none"> LE 6.11 Water Bodies - Standing Water LE 6.12 Water Bodies and Associated Plants - Shallow Scrape LE 6.2 Barks and Ditches LE 6.21 Banks and Ditches - High Tide Root Features 	<p>Wetland Habitats (LE 6)</p> <ul style="list-style-type: none"> LE 6.41 Marsh and Wet Grassland - Coastal Grazing Marsh <p>Hard Landscape Features (LE 7)</p> <ul style="list-style-type: none"> LE 7.4 Reinforced Earth Bund <p>Earthworks</p> <ul style="list-style-type: none"> Proposed Contours 	<p>Ecological Habitats (LE 8)</p> <ul style="list-style-type: none"> LE 8.1 Open Mosaic Habitat LE 8.2 Ancient Woodland Compensation Planting LE 8.3 Woodland Mitigation Planting LE 8.4 Wetland / Farmland Creation LE 8.5 Ecology Pond (indicative symbol only) LE 8.6 Acid Grassland Soil Salvage 	<p>Noise (E 1)</p> <ul style="list-style-type: none"> E 1.2 Acoustic Barrier-Built Elements (typically inc. highway boundary fence) <p>Water (E 2)</p> <ul style="list-style-type: none"> Flood Compensation Areas (E 2-FCA) Flood Defence (E 2-FD) 	<p>Ecological (E 3)</p> <ul style="list-style-type: none"> E 3.2 Ecological Habitat Creation and Receptor sites for Protected Species E 3.2 Dormouse Boxes E 3.2 Bat Boxes E 3.2 Ecological Culvert E 3.2 Bat Barn Block 	<ul style="list-style-type: none"> E 3.2 Ecological Fencing (inc. highway boundary fence) E 3.2 Barn Owl Box
--	---	---	--	---	--	--	--

Client:

Project: LOWER THAMES CROSSING

Status	Initial Status or WIP	Original Size	Revision
Application Document Number	TR010032/APP/6.2	A1	P01.6
Scale	1:1250		
Drawing title	ENVIRONMENTAL MASTERPLAN SECTION 3 SHEET 9		
Drawing Number	HE540039-CJV-EGN-S03_EN000000_Z-DR-ZZ-00010		



NO DESIGN INFORMATION ON THIS SHEET
FOR ENVIRONMENTAL MASTERPLAN

Contains Ordnance Survey data. © Crown copyright and database rights 2022. Ordnance Survey 100030649

0 10 20 30 40 50 60 70 80 90 100 METRES

SCALE 1:1250 (A1)
SCALE 1:2500 (A3)

Section Overview Sheet: Refer to section overview plan at the start of the section.

Rev	Status	Rev. Date	Purpose of revision	Drawn	Chkd	Apprv'd
P01.5	SO	08/08/2022				LD

Environmental Mitigation Legend: Refer to Main Legend for baseline and scheme features (Dwg: HE540039-CJV-EGN-SZZ_EN000000_Z-DR-ZZ-000011).

<p>Order Limits</p> <ul style="list-style-type: none"> Permanent Acquisition of Land <p>Grassland (LE 1)</p> <ul style="list-style-type: none"> LE 1.3 Species Rich Grassland LE 1.31 Species Rich Chalk Grassland LE 1.32 Species Rich Annual Wildflower Grassland LE 1.4 Rock and Scree 	<p>Planting (LE 2)</p> <ul style="list-style-type: none"> LE 2.1 Woodland LE 2.11 Woodland With Non-Native Species LE 2.14 Wet / Carr Woodland LE 2.2 Woodland Edge LE 2.22 Scrub Woodland LE 2.4 Linear Belt of Shrubs and Trees <p>Hedges (LE 4)</p> <ul style="list-style-type: none"> LE 4.3 Native Species Hedge (untrimmed) LE 4.4 Native Hedgerow With Trees 	<p>Individual Trees (LE 5)</p> <ul style="list-style-type: none"> LE 5.1 Individual Trees <p>Wetland Habitats (LE 6)</p> <ul style="list-style-type: none"> LE 6.11 Water Bodies - Standing Water LE 6.12 Water Bodies and Associated Plants - Shallow Scrape LE 6.2 Banks and Ditches LE 6.21 Banks and Ditches - High Tide Root Features 	<p>Wetland Habitats (LE 8)</p> <ul style="list-style-type: none"> LE 8.1 Open Mosaic Habitat LE 8.2 Ancient Woodland Compensation Planting LE 8.3 Woodland Mitigation Planting LE 8.4 Wetland / Farmland Creation LE 8.5 Ecology Pond (indicative symbol only) LE 8.6 Acid Grassland Soil Salvage 	<p>Hard Landscape Features (LE 7)</p> <ul style="list-style-type: none"> LE 7.4 Reinforced Earth Band <p>Earthworks</p> <ul style="list-style-type: none"> Proposed Contours 	<p>Ecological (E 3)</p> <ul style="list-style-type: none"> E 3.2 Ecological Habitat Creation and Receptor sites for Protected Species E 3.2 Dormouse Boxes E 3.2 Bat Boxes E 3.2 Ecological Culvert E 3.2 Bat Barn Block 	<p>Noise (E 1)</p> <ul style="list-style-type: none"> LE 8.7 Nitrogen Deposition (NDEP) Compensation Area E 1.2 Acoustic Barrier-Built Elements (typically inc. highway boundary fence) <p>Water (E 2)</p> <ul style="list-style-type: none"> Flood Compensation Areas (E 2-FCA) Flood Defence (E 2-FD) 	<p>Ecological (E 3)</p> <ul style="list-style-type: none"> E 3.2 Ecological Habitat Creation and Receptor sites for Protected Species E 3.2 Dormouse Boxes E 3.2 Bat Boxes E 3.2 Ecological Culvert E 3.2 Bat Barn Block 	<p>E 3.2 Barn Owl Box</p> <ul style="list-style-type: none"> E 3.2 Ecological Fencing (inc. highway boundary fence)
--	---	---	--	--	--	---	--	---

Client:

Project: LOWER THAMES CROSSING

Status	Initial Status or WIP	Original Size	Revision
Application Document Number	TR010032/APP/6.2	A1	P01.5
Scale	1:1250		
Drawing title	ENVIRONMENTAL MASTERPLAN SECTION 3 SHEET 10		
Drawing Number	HE540039-CJV-EGN-S03_EN000000_Z-DR-ZZ-00011		

If you need help accessing this or any other National Highways information, please call **0300 123 5000** and we will help you.

© Crown copyright 2023.

You may re-use this information (not including logos) free of charge in any format or medium, under the terms of the Open Government Licence. To view this licence:

visit www.nationalarchives.gov.uk/doc/open-government-licence/

write to the **Information Policy Team, The National Archives, Kew, London TW9 4DU**, or email psi@nationalarchives.gsi.gov.uk.

Mapping (where present): © Crown copyright and database rights 2023 OS 100030649. You are permitted to use this data solely to enable you to respond to, or interact with, the organisation that provided you with the data. You are not permitted to copy, sub-license, distribute or sell any of this data to third parties in any form.

If you have any enquiries about this publication email info@nationalhighways.co.uk or call **0300 123 5000***.

*Calls to 03 numbers cost no more than a national rate call to an 01 or 02 number and must count towards any inclusive minutes in the same way as 01 and 02 calls. These rules apply to calls from any type of line including mobile, BT, other fixed line or payphone. Calls may be recorded or monitored.

Printed on paper from well-managed forests and other controlled sources when issued directly by National Highways.

Registered office Bridge House, 1 Walnut Tree Close, Guildford GU1 4LZ

National Highways Limited registered in England and Wales number 09346363